



# INSTALLATION GUIDE

Direct-Fit Bus Bar Kit, Fits 2021+ Ford Bronco  
SKU: BNLT-BR-21-BUS

## TABLE OF CONTENTS

1. RESOURCES & CONTACT INFO
2. IMPORTANT SAFETY INFORMATION
  - INSTALL TIME & DIFFICULTY
  - SUPPLIED PARTS
  - REQUIRED TOOLS
5. DISPOSAL & WARRANTY INFORMATION

## RESOURCES & CONTACT



**CALL 1.877.466.4744**

CUSTOMER SERVICE HOURS: MON-FRI 8:30AM-5:00PM EST



**@BORNEOFFROAD**



**@BORNEOFF-ROAD**



**BORNEOFFROAD**



**@BORNEOFFROAD**



**ENGINEERING BLOG**

[WWW.BORNE.COM/ENGINEERING](http://WWW.BORNE.COM/ENGINEERING)

### IMPORTANT SAFETY INFORMATION

- ▶ Borne Off-Road recommends you use safety glasses and protective gloves during the installation of our products
- ▶ Raise vehicle only on jack stands or on a vehicle lift
- ▶ Allow vehicle to cool completely prior to attempting installation
- ▶ Do not run the engine or drive the vehicle while overheating; serious damage can occur
- ▶ Please dispose of any liquids properly
- ▶ Borne Off-Road is not responsible for any vehicle damage or personal injury due to installation errors, misuse, or removal of Borne Off-Road products
- ▶ If you need any assistance while installing our products, reach out to our Customer Service Team at 1-877-GOMISHI

### SUPPLIED PARTS

- |                         |                    |
|-------------------------|--------------------|
| (1) DIRECT -FIT BRACKET | (2) BATTERY CABLES |
| (1) BUS BAR SET         | (8) M4 BOLTS       |

### REQUIRED TOOLS

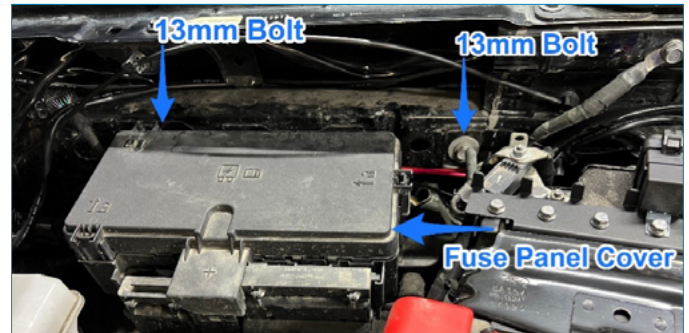
- |                    |                       |
|--------------------|-----------------------|
| 1/4" RATCHET       | PHILLIPS SCREWDRIVER  |
| 13MM DEEP SOCKET   | SIDE/DIAGONAL CUTTERS |
| 14MM DEEP SOCKET   | RULER                 |
| 13MM WRENCH        | MARKER                |
| 2.5MM ALLEN WRENCH |                       |

**INSTALL TIME: 1.5 HOURS**

**INSTALL DIFFICULTY:** 🔧 🔧 🔧 🔧 🔧

### INSTALLATION INSTRUCTIONS

1. Remove the fuse panel cover and loosen the two 13mm bolts on the driver-side of the engine bay.



2. Feed the bus bar bracket into the drive-side of the engine bay and set the rearward mounting point onto the rear 13mm bolt.



3. Rotate the front of the bus bar bracket upward and inward towards the side of the engine bay and then lower it onto the front 13mm bolt.



4. Tighten the 13mm bolts to secure the bus bar bracket.



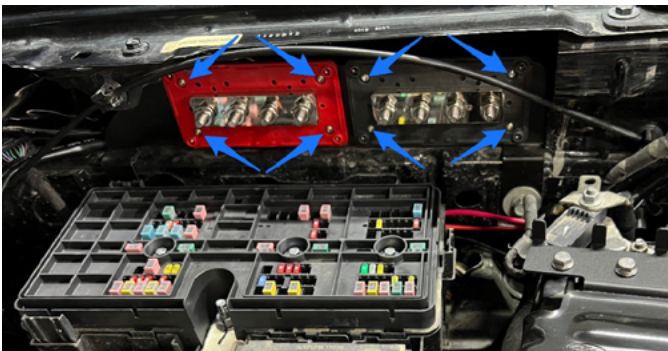
Continued on next page



**5.** Loosen the four Phillips screws on each of the bus bars, then remove the covers from the bus bars. Once the covers are removed, remove the hardware bags from the bus bars and set them aside, as they will not be needed for this installation.



**6.** Fasten the positive (red) bus bar to the rearward position on the bus bar bracket using four of the provided M4 bolts. Fasten the negative (black) bus bar to the forward position on the bus bar bracket using four of the provided M4 bolts.



**7.** Fasten one side of the positive battery cable to the rearmost terminal post on the positive bus bar and the other side to the fuse panel terminal post.



**8.** Fasten one side of the negative battery cable to the forward-most terminal post on the negative bus bar and the other side to the chassis ground.



**9.** Connect all Borne Off-Road lighting/accessory positive and negative ring terminals to the remaining bus bar terminal posts.



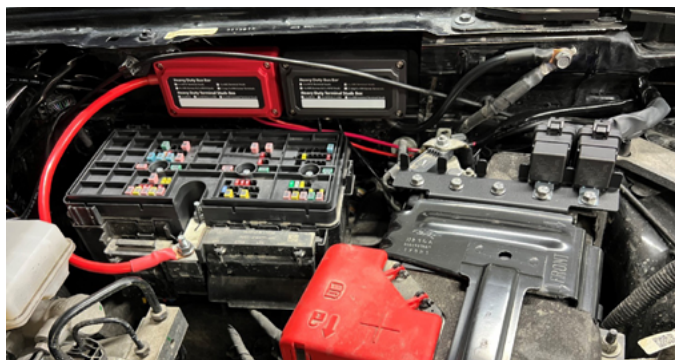
Continued on next page



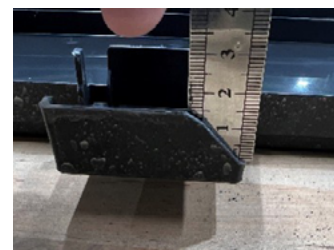
**10.** Remove panels from the bus bar covers for wire clearance.



**11.** Install the bus bar covers and tighten the Phillips screws to secure them in place.



**12.** Using a pair of side/diagonal cutters, cut a 15mm deep notch into the fuse panel cover in the location shown in the images below. This notch is necessary to provide clearance for the positive battery cable previously installed in step 7.



**13.** Reinstall the fuse panel cover.



Congratulations you have completed your installation.

Continued on next page

## DISPOSAL INSTRUCTIONS

- › Do not dispose of any product as unsorted municipal waste. Use separate collection facilities. Contact your local authority for information regarding the collection systems available.
- › Never improperly dispose of any coolant, oil, or other chemicals.

### VIEW WARRANTY INFO



#### **WARNING**

Cancer and  
Reproductive Harm  
[www.P65Warnings.ca.gov](http://www.P65Warnings.ca.gov)



- › This product can expose you to chemicals which are known to the state of California to cause cancer. For more information visit:

[www.p65warnings.ca.gov](http://www.p65warnings.ca.gov)